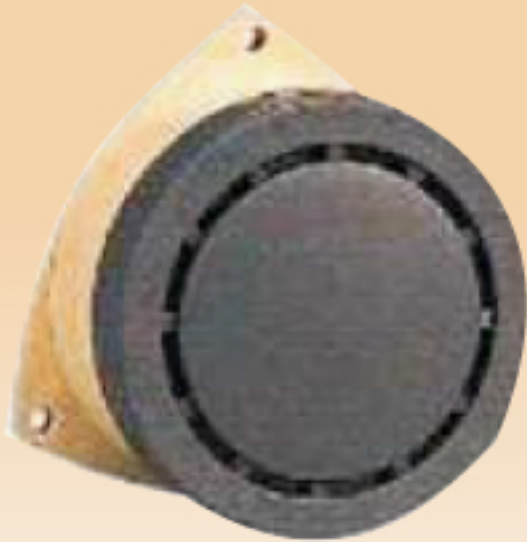




BUZZERS



CBZ -10



CBZ -20



CBZ -30

SPECIFICATIONS

Model No. SPEC.	CBZ - 10	CBZ - 20	CBZ - 30
MOUNTING STYLE	SURFACE MOUNT	FLUSH MOUNT	FLUSH MOUNT
VOLUME IN dB	8	8	4
WEIGHT in Gms	160	190	125
OPERATING VOLTAGE	AC : - 110, 220, 380 V DC : - 12 & 24 V		AC : - 110, 220V DC : - 12 & 24 V

Kaycee for Commitment... Kaycee for Quality...

