



# KAYCEE

BRAND THAT SET THE STANDARDS

## On Load Changeover Switch

Cubical Load Break Switch

On Load by Pass Switch

### Range

**40 - 3150A,  
4 Pole, 415 V AC  
AC-23A**



### SALIENT FEATURES

- Quick make & break mechanism
- Silver Plated current carrying parts
- Flexibility for termination of supply
- Strong endurance & resistance to heat
- Operating handle only in "O" position only
- Compact Body of fibre glass, reinforced polyster resin
- Bolt holders installed on terminals for easy cables / bus bar termination



## ON LOAD CHANGEOVER SWITCHES COMPACT VERSION

### RANGE & FRAME SIZE

FOUR POLE 415 V AC 50 Hz.

SIZE 0.....40A, 63A, 80A, 100A,

SIZE 1.....125A, 160A, 200A

SIZE 2.....250 A, 320A

SIZE 3.....400A, 630A

SIZE 4\* .....800A.

SIZE 5\* .....1000A, 1250A, 1600A.

SIZE 6\* .....2000A, 2500A, 3150A.

\* under development

### EXECUTION

A. Open Execution

B. In thick Steel Sheet Enclosure

### DEFINATION & FUNCTION

KAYCEE range of co-series compact version On Load Changeover switches are manually front operated 4 poles switches with very compact design which helps to save the space in panel boards resulting in low costing of panel boards. These comprise of two On Load Switch Disconnectors, which are coupled together and are mechanically interlocked with common outgoing. these are used in low voltage distribution circuits and at places where continuity of supply is necessary for switching from main supply to an alternate source of supply and vice versa.

All CO-SERIES Switches are capable of making, carrying & breaking currents under normal circuit conditions, which may include operating under overload conditions and also carrying currents under specified abnormal circuit conditions, which may include operating under overload conditions and also carrying currents under specified abnormal circuit conditions such as short circuit for a specified time.

### CONFORMITY TO STANDARDS

Conforms to IEC-947-3

IS : 13947 Part (I & III) - 1993

IEC : 664

### SALIENT FEATURES

Compact & Standardised sizes for range 40 A - 3150 A as compared to leading indigenous makes, thus saves panel space & cost.

While breaking the circuit, guaranteed sufficient air sectioning clearance.

Protection against over currents & short circuit fault of high rupturing capacity upto 80 KA.

Strong endurance & resistance to heat (Tropicalised).

Phase barriers between each phase terminal.

Flag indicator for three stable positions i.e. (i-0-ii) & possible switching from one source to the other, on load, thereby fulfilling the role switching device with interlocking protection for two modes of supply, one from electricity board & other from standby source i.e. generator and providing back up.

The shorting link can be connected on either side to facilitate interchangeability of line and load.

Suitable for auxiliary contacts up to 2 NO & 2 NC for signalisation & interlocking.

The moulded body's raw material is glass fiber reinforced polyester (SMC), having high mechanical & dielectric strength.

Strong & ergonomic operating handle with door interlock & padlock facility.

Utilization category -AC 23 A.

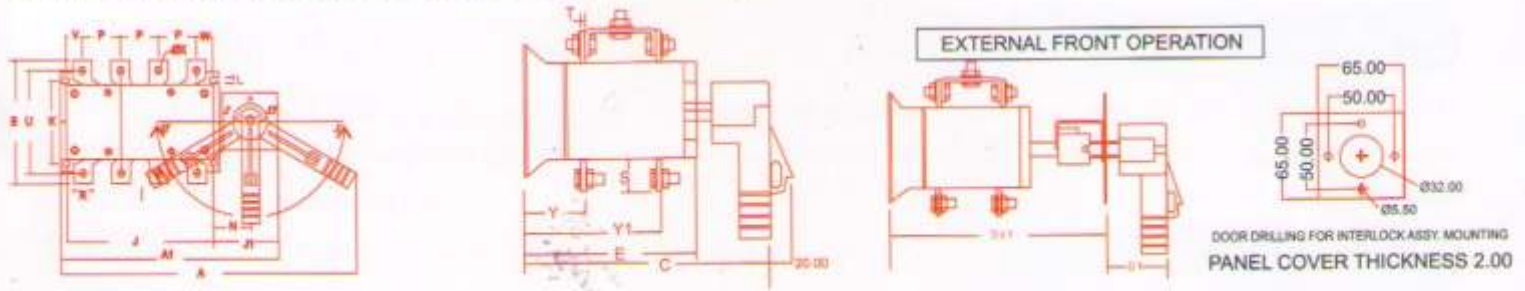


# The Cubicle Onload Changeover Switch

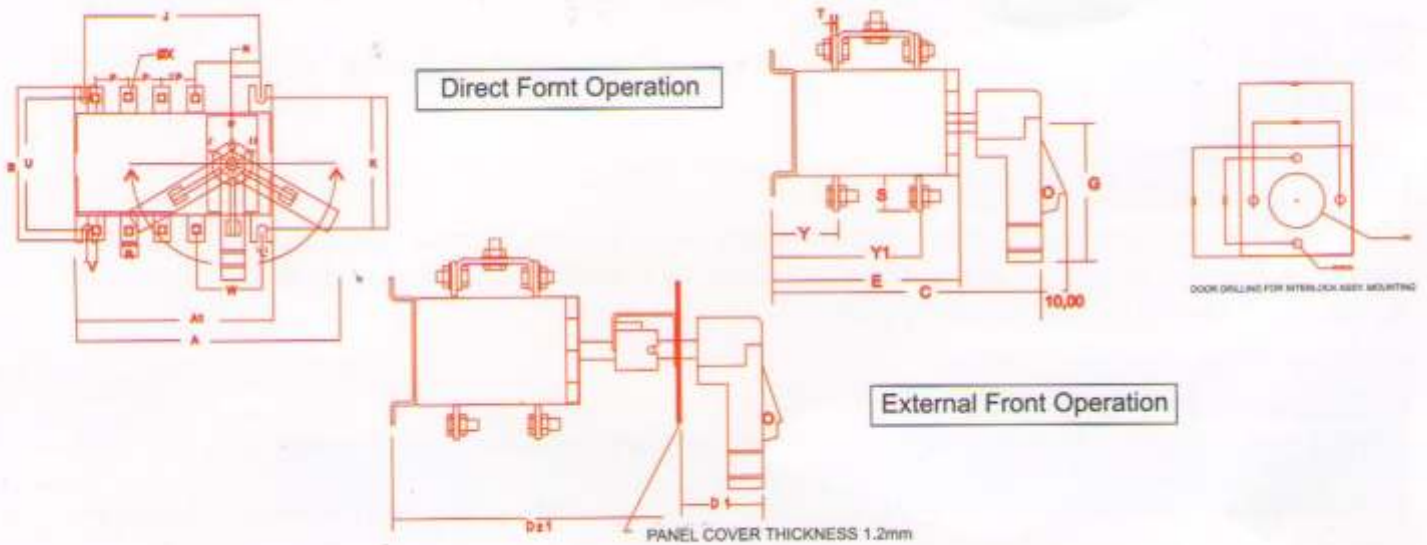
## CO-SERIES



### Technical Data and Dimensional Details of Change Over Switch



Change Over Switch 100A-3150A  
Size: 1-6



FRAME		OVER ALL DIMENSION										FIXING OF SW					CONNECTION TERMINAL										SW.WT.
SIZE	RATING	A	A1	B	C	D	D1	E	G	J	J1	K	L	N	P	R	S	T	U	V	W	QX	Y/Y4	Y1	Y2	Y3/Y5	OPEN EX.
0	4X40	200	145	115	170	192	45	135	85	128	-	98	6.5	21.5	25.5	12	18	2.5	95	7	48	6.5	29	84	-	-	1.8 KG.
0	4X63	200	145	115	170	192	45	135	85	128	-	98	6.5	21.5	25.5	12	18	2.5	95	7	48	6.5	29	84	-	-	1.8 KG.
0	4X80	200	145	115	170	192	45	135	85	128	-	98	6.5	21.5	28.0	14	18	2.5	95	3.5	44.5	6.5	29	84	-	-	1.9 KG.
0	4X100	200	145	115	170	192	45	135	85	128	-	98	6.5	21.5	28.0	14	18	2.5	95	3.5	44.5	6.5	29	84	-	-	1.9 KG.
1	4X100A	305	232	135	218	232	64	152	117	160	58	95	7	26	36	18.5	25	3	115	25	25	6.5	56	123	-	-	3.5 KG.
1	4X125A	305	232	142	218	232	64	152	117	160	58	95	7	26	45	22	28	3	118	12.5	12.5	8.5	56	123	-	-	4.0 KG.
1	4X160A	305	232	155	218	232	64	152	117	160	58	95	7	26	48	25	35	3	123	7.5	7.5	10.5	56	123	-	-	4.5 KG.
1	4X200A	305	232	155	218	232	64	152	117	160	58	95	7	26	48	25	35	4	123	7.5	7.5	10.5	56	123	-	-	5.0 KG.
2	4X250A	363	285	192	238	249	64	172	117	218	62	111	7	27	64	32	46	4	153	6	12	12	62	140	-	-	7.3 KG.
2	4X320A	363	285	192	238	249	65	173	130	218	63	111	7.5	27	64	32	46	4.5	152	7	13	12	62	140	-	-	7.3 KG.
3	4X400A	465	362	235	307	320	64	242	155	271	81	179	8.75	45	73	40	40	5	205	28	28	11	84	195	-	-	14.0 KG.
3	4X530A	465	362	270	307	320	64	242	155	271	81	179	8.75	45	81	55	55	5	230	14	14	14.5	84	195	-	-	17.0 KG.
4	4X800A	610	432	320	370	380	81	305	212	340	84	220	11	50.5	80	50	60	6	268	52	48	15	107	251	-	-	27 KG.
5	4X1000A	703	565	332	370	380	81	305	165	474	84	220	11	50.5	120	63	65	6	267	66	48	-	107	251	-	-	35 KG.
5	4X1250A	703	565	332	370	380	81	305	165	474	84	220	11	50.5	120	63	65	7	267	66	48	-	108	252	-	-	37 KG.
5	4X1600A	703	565	362	370	380	81	305	165	474	84	220	11	50.5	120	80	80	15	282	66	48	-	112	256	-	-	61 KG.
6	4X2000A	703	570	450	578	580	-	-	-	474	84	330	-	-	120	-	125	8	350	66	48	-	88	223	318	450	72 KG.
6	4X2500A	703	570	450	578	580	-	-	-	474	84	330	-	-	120	-	125	10	350	66	48	-	89	228	315	454	78 KG.
6	4X3150A	703	570	500	578	580	-	-	-	474	84	330	-	-	120	-	125	15	375	66	48	-	82	232	305	458	110 KG.

# ON LOAD BY PASS SWITCH

## FUNCTION

KAYCEE ON LOAD BY PASS SWITCH connects normal supply to the loads in case stabilized source fails. It bypasses the UPS / Servo stabilizers in case of their failures and provides a mean of connecting alternative supply to the load. By Pass Switch also ensures the isolation of up stream and down stream circuit in one operation.

## APPLICATION

KAYCEE ON LOAD BY PASS SWITCH are designed to meet customers specific need in the IT companies where UPS & Servo Stabilizer provide main source of supply. In emergency normal supply can be made available to services without disturbing any installation and at the same time providing time for maintenance of UPS etc. without breakdown of services.

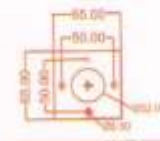
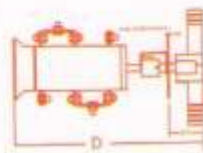
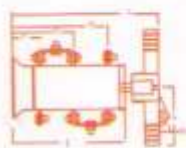
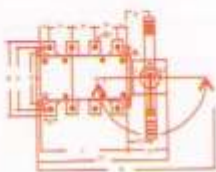
Auxiliary Contacts 1. NO. NC or 2NO. NC are fitted to provide indication whether stabilized supply connected or normal supply. They also provide signalizations or pre control.

## WORKING PRINCIPLES

When BY PASS SWITCH is selected at position '0' all the contacts of three isolator are open circuited and provide total isolation. At position 'I' both isolator No. I & III are closed and stabilized supply is connected to the load. At position 'II' only isolator II is closed and isolator No. I & III are open thus by passing UPS and connecting normal supply directly to load.

## Electrical Parameters

FEATURES	RATINGS OF BY PASS SWITCH					
	125A	200A	250A	320A	400A	630A
Thermal Current Ith	125	200	250	320	400	630
Insulation Voltage Ui (V)	1000	1000	1000	1000	1000	1000
Di - Electric Strength 50Hz, 1 Min. (V)	5000	5000	5000	5000	5000	5000
Rated impulse withstand Voltage (KV)	6	8	8	8	12	12
Rated Operational Current at 415V	125	200	250	320	400	630
Short Circuit Current with fuse - (KA rms)	80	80	80	80	80	80
Breaking Capacity (A rms) 415V AC, PF = 0.35	1000	1600	2000	2560	3200	6300
Making Capacity (A rms) 415V AC, PF = 0.35	1250	2000	2500	3200	4000	6300
Mechanical life (No. of Operations)	7000	7000	7000	7000	5000	5000
Electrical Life (No. of Operations)	1500	1500	1000	1000	1000	1000
Max Al. Cable (Sq.mm)	50	150	185	240	300	2x300



RATING	OVERALL DIMENSION														FRAME OF SW										CONNECTION TERMINAL										SW WT.
	A	A1	B	C	D	D1	E	G	J	J1	K	L	N	P	R	S	T	U	V	W	ØX	Y	Y1	Y2	RATING	S.S.KG.									
4X100A	305	232	138	283	300	64	219	140	160	58	95	7	26	36	19	29	3	118	26	25	8.5	56	123	190	5.5 KG.										
4X125A	305	232	142	283	300	64	219	140	160	58	95	7	26	45	22	28	3	118	13	13	8.5	56	123	190	6.0 KG.										
4X200A	308	232	155	283	300	64	219	140	180	58	95	7	26	48	25	35	4	123	7.5	7.5	11	56	123	190	7.0 KG.										
4X250A	363	286	192	314	331	64	250	140	215	62	111	7	27	64	32	46	4	153	6	12	12	62	140	216	10.0 KG.										
4X320A	363	286	192	314	331	65	250	140	212	63	111	7.5	27	64	32	48	4.5	152	7	13	12	62	140	216	10.5 KG.										
4X400A	465	362	235	417	434	64	353	140	271	81	179	8.8	45	73	40	40	5	205	26	26	11	84	195	306	20.0 KG.										
4X630A	465	362	270	417	434	64	353	140	271	81	179	8.8	45	81	55	55	5	230	14	14	15	84	195	306	26.0 KG.										

# The Cubicle Onload Changeover Switch

## CO-SERIES



### Cubical Load Break Switch

#### 40A - 3150A, 4 Pole, AC 23A duty

Tested at CPRI for AC-23A duty

Compact Design

Quick make & quick break mechanism

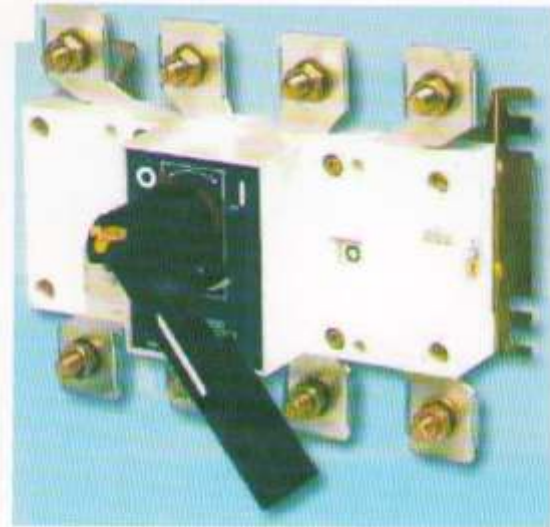
Unique safety handle with door pad locking

Auxiliary contacts upto 2NO, 2NC

Suitable for DC- 23A, 260V, application without any derating.

Available in open execution and sheet steel enclosure

Bolt holders for easy installation

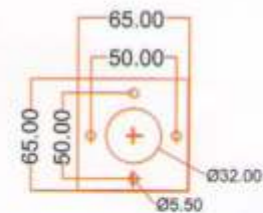
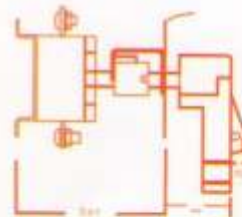
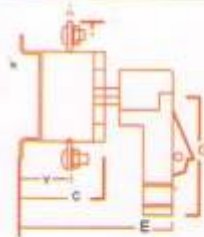
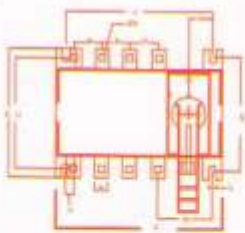


#### Direct Front Operation

#### External Front Operation

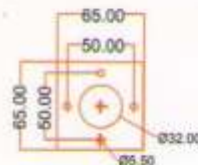
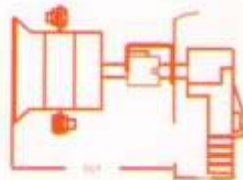
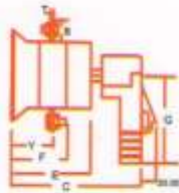
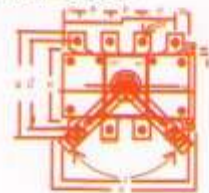
PANEL COVER THICKNESS 1.2 mm

DOOR DRILLING FOR INTERLOCK ASSY. MOUNTING



PANEL COVER THICKNESS 2.00

FRAME SIZE 0

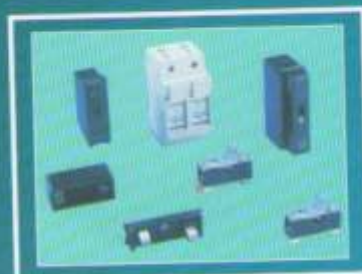
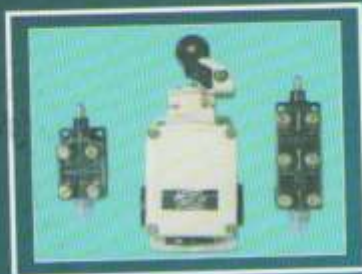
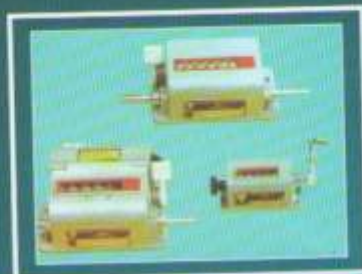
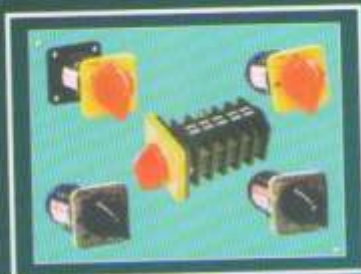


FRAME SIZE: 01-06

FRAME		OVER ALL DIMENSION						FIXING OF SW						CONNECTION TERMINAL										SW.WT.
SIZE	RATING	A	B	C	D	E	G	J	K	L	M	N	O	P	R	S	T	U	V	W	QX	Y	Y2	OPEN Ex.
0	4X40	145	115	76	138	115	85	128	98	6.5		21.5	-	25.5	12	18	2.5	95	7	48	6.5	29	-	1 KG.
0	4X63	145	115	76	138	115	85	128	98	6.5		21.5	-	25.5	12	18	2.5	95	7	48	6.5	29	-	1 KG.
0	4X80	145	115	76	138	115	85	128	98	6.5		21.5	-	28.0	14	18	2.5	95	3.5	44.5	6.5	29	-	1.1 KG.
0	4X100	145	115	76	138	115	85	128	98	6.5		21.5	-	28.0	14	18	2.5	95	3.5	44.5	6.5	29	-	1.1 KG.
1	4X125 A	184	142	160	174	103	120	165	95	7	15	83	83	45	22	28	3	118	14	14	8.5	56	-	1.8 KG.
1	4X160 A	184	155	160	174	103	120	165	95	7	15	83	83	48	25	35	3	123	9	9	10.5	58	-	2 KG.
1	4X200 A	305	155	160	174	103	120	165	95	7	15	83	83	48	25	35	4	123	9	9	10.5	58	-	2.2 KG.
2	4X250 A	235	192	174	188	117	140	218	112	7	20	109	109	64	32	46	4	152	10	16	12	64	-	3.2 KG.
2	4X320 A	235	192	174	188	117	140	218	112	7	20	109	109	64	32	46	4.5	152	10	16	12	64	-	3.4 KG.
3	4X400 A	290	235	216	226	158	140	270	180	8.75	30	135	135	73	40	40	5	205	26	26	13	86	-	7.0 KG.
3	4X630 A	290	270	216	226	158	140	270	180	8.75	30	135	135	81	55	55	5	230	13	13	15	86	-	8.0 KG.
4	4X800 A	360	320	270	275	205	212	340	220	11	28	170.0	170	80	50	60	6	268	52	48		110	-	11.7 KG.
5	4X1000 A	496	332	270	275	205	165	474	220	11	28	237	237	120	63	65	6	267	66	48		110	-	16.5 KG.
5	4X1250 A	496	332	270	275	205	185	474	220	11	28	237.0	237	120	63	65	7	268	66	48		111	-	18.5 KG.
5	4X1600 A	496	362	270	275	205	185	474	220	11	28	237.0	237	120	80	80	15	262	66	48		115	-	23.0 KG.
6	4X2000 A	498	450	361	365	281	-	474	330	-	28	-	-	120	-	125	6	350	62	48		88	223	38 KG.
6	4X2500 A	498	450	361	365	281	-	474	330	-	28	-	-	120	-	125	10	350	62	48		89	228	39.5 KG.
6	4X3150 A	498	500	361	365	281	-	474	330	-	28	-	-	120	-	125	15	375	62	48		82	232	58.5 KG.







#### OFFICES AT:

**BANGALURU :** C/o. CMS Computers Ltd., C- Bring Shop, Site No. 52, SY No. 46/5, next to Bescon Office, near Kudlu Gate, Hong Sandra Village, Begur Hobby, Bangalore South Bengaluru - 560068 Mob : 9342853324

**CHENNAI :** C/o. CMS Computers Ltd. CMS Tower 42, Cathedral Road, Chennai - 600 086 Mob : 9381201556

**KOLKATTA :** C/o. CMS Computers Ltd. 10/D/2, Hochi Minh Sarani, 1st Floor, KOLKATTA - 700 071 Mob : 9339200968

**NEW DELHI :** C/o. CMS Computers Limited, 35 - A, Rear Building, Near CTC Plaza, Opp. Maharani Bagh, Ring Road Kilokari, N-Delhi - 110 014 Mob : 9312004687

**INDORE :** Mob : 9300751464

**REPUTED CUSTOMERS :** • ABB • Crompton Greaves • L & T • Siemens • C & S • Bhel • G E Power • NTPC • ICF • RCF • Areva T&D • Schneider • HMT Bharti Airtel • Reliance • Jyoti Ltd. • Mega Win • BSES • Hindustan Motors • Indian Railways



## KAYCEE INDUSTRIES LIMITED

32, Ramjibhai Kamani Road, Ballard Estate, Mumbai 400 001  
Tel.: 91-22-22613521/22/23 Fax: 91-22-22616106  
Website - [www.kayceeindustries.com](http://www.kayceeindustries.com) Email: [kayceeindltd@vsnl.com](mailto:kayceeindltd@vsnl.com)